

**EBS**<sup>®</sup>  
Ink-Jet Systeme

# EBS<sup>®</sup> 2500/128-18

High Resolution Ink-Jet Printer

**Preliminary  
Version**

- Easy to handle
- Replaces expensive labels
- Complete coding solution



Picture: Real-time online editing in browser window, True WYSIWYG

# Technical specifications

## Printer performance

### High Resolution Print Head - Ink-Jet technology

- Number of nozzles: 128
- Nozzle pitch: 137  $\mu\text{m}$  (approx. 1/185 inch)
- Vertical resolution: 185 dpi
- Active printing height: 17,4 mm (0.685 inch)
- Printing speed at horizontal resolution:
  - 216 dpi: 30 m/min (98.42 ft/min)
  - 108 dpi: 60 m/min (196.85 ft/min)
  - 72 dpi: 120 m/min (393.70 ft/min)
- Ink: oil ink and others
- Drop volume: 80 pl
- Intensity control (of whole printout)
- Print distance from nozzle to substrate (for best quality of printouts): maximum 4 mm
- Ink bottle capacity: 500 ml

## Memory for user data / projects storage

- USB pendrive: factory installed 1 GByte
- File systems: FAT, FAT32 (possibility of back up data with standard PC computer)

## Barcodes

Numeric: EAN codes, Code 11, Code 25, Codabar, Leticode and others  
Alphanumeric: Code 39, GS1-128 (UCC/EAN-128), Code 128, 2D:Data Matrix, 2D:MicroPDF417 and others

## Communication, connections

### 1x Ethernet:

- TCP/IP
- Web server
- Network neighborhood (for pendrive network share)

### 2x USB 2.0 connectors:

- Storage memory (factory installed pendrive internal)
- External: other optional EBS equipment (RS-232 converter, signal lamp, etc.)

## Triggering / synchronization

- Built-in product detector (photocell)
- External product-detector connector (optional)
- External shaft encoder connector (optional)

## Dimensions and weight

### Size:

- Length: 380 mm (14.96")
- Weight: 160 mm (6.30")
- Height: 180 mm (7.09")

**Weight:** 4.4 kg (9.7 lbs) - with 0.5 l ink bottle

## Cabinet

Stainless steel

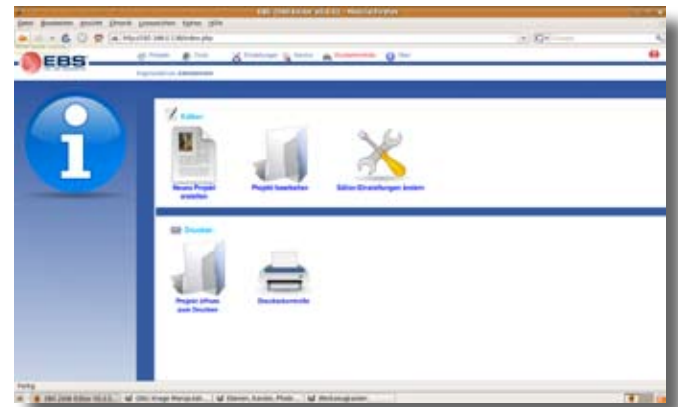
**Protection class** (BS EN 60529): **IP 54 / NEMA13**

## Environment

- Operating temperature range: 5 - 40°C (40 - 104°F)  
Relative humidity: up to 80% non-condensing  
Power supply (included in cabinet):
- AC 100-240 V, 50-60 Hz
  - 0.95 - 0.45 A / max. 24 W - low power consumption

## Editing & printing capabilities

- **State of the art, all-in-one system for high quality printouts on all porous surfaces. Replaces expensive labels. Best quality at all times.**
- Lightweight, compact and easy to mount.
- Web (www) editor allows editing via Ethernet interface
- LCD 5.7" color display with touch screen for printer control, file management & maintenance with preview function of message (Editing via PC)
- Works virtually under any operation system (Windows®, Linux®, Mac®) - no need to install printer-specific software - only general purpose Firefox® web browser is required,
- Fixed text + very flexible types of variable text (counters, date (including offset and shifts), expiry date, text files, RS 232 data)
- TrueType® fonts with possibility of installing unlimited number of additional user fonts
- Graphics / logos with free resizing, PNG file import function
- Text / graphics / barcode rotation
- Horizontal rotation (reverse print) / vertical rotation (upside down print)
- Useful online help including a number of illustrations and animations
- Automatic support for making test printouts while editing
- Unique intensity regulation for different porous surfaces
- Automatic conveyor parameters detection
- Multi-level user management with password protection



(Picture: Editing window in Firefox browser)

## Other benefits

- Best price/performance ratio
- Highest quality components
- Future-proof with firmware upgrade possibility
- 2D Matrix code
- True type fonts



Regulatory compliance



**TÜV NORD** for production plant



**Manufacturer:**  
EBS Ink-Jet Systeme GmbH  
Alte Ziegelei 19-25  
D-51588 Nümbrecht-Elsenroth  
Tel: +49 (0) 22 93 / 93 9-0  
Fax: +49 (0) 22 93 / 93 9-3  
www.ebs-inkjet.de

**Your contact / dealer / distributor:**

**SIGNEA**  
SYSTEME  
+27 11 965 0823  
admin@signea.co.za  
www.signea.co.za